

OAKSTONE  
**SN CELESTE**  
*Luxury Living Redefined*



@ Hosa Road Junction

*Make your house  
into a home*



## ABOUT US

At Oakstone Ventures, our goal is to redefine sustainable living by integrating cutting-edge technology with environmentally conscious practices. We are committed to creating communities that blend modern comfort with nature, emphasizing eco-friendly construction, renewable energy, and organic living. Our mission is to reduce carbon footprints and foster environments where residents can reconnect with nature, leading a balanced and sustainable lifestyle. Through our innovative projects, we aim to inspire a new standard of living—one that promotes harmony between people and the planet





WHERE LUXURY MEETS COMFORT  
IN **BEAUTIFULLY  
DESIGNED**  
APARTMENT COMPLEX

*We Offer You*

*Spacious*  
**2/3 BEDROOM  
APARTMENTS**

WITH TOP-NOTCH AMENITIES. IMAGINE  
FINDING YOUR DREAM HOME WHERE ALL  
YOUR NEEDS ARE WITHIN A  
15-MINUTE REACH.

This newly developed residential apartment project has received BBMP approval and offers spacious apartments with top-notch amenities and excellent connectivity.

Located at the bustling Hosa Road junction, near existing and upcoming communities and amenities at Hosur Road and Electronic City, this project provides an ideal living space with easy access to essential facilities.

OAKSTONE  
**SN CELESTE**  
*Luxury Living Redefined*

**NO COMMON WALLS**

**46-48% UDS**

*Experience*

**SERENE LIVING AMIDST LUSH GREEN SURROUNDINGS AND  
WORLD-CLASS FACILITIES**

**BREATHE EASY 50% OPEN SPACE BECKONS!**

## PROJECT HIGHLIGHTS

**PROJECT AREA** 2 ACRES

**BANK APPROVAL** HDFC, SBI, ICICI  
All Major Banks

**NO OF TOWERS** "2" - A Block and B Block

**NO OF UNITS** 130

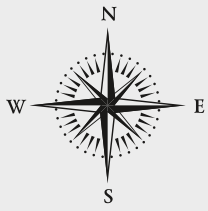
**ELEVATION  
A - BLOCK** S + G + 3 F  
(Stilt + Ground + 3 Floors)

**ELEVATION  
B - BLOCK** B + S + G + 3 F  
(Basement + Stilt +  
Ground + 3 Floors)

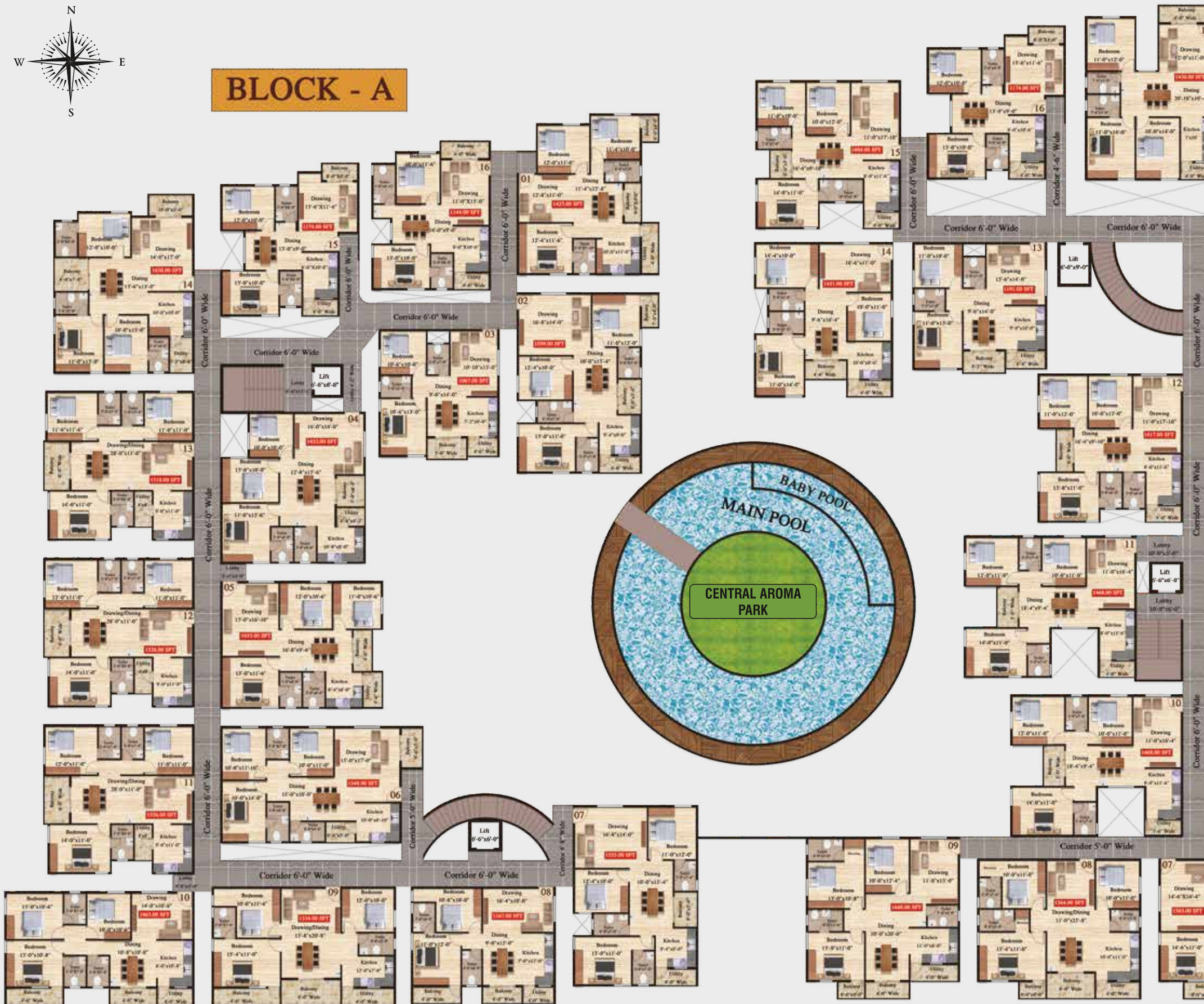
**MULTIPURPOSE  
HALL + GYM** B - Block



# TYPICAL FLOOR PLAN



## BLOCK - A



# BLOCK - B

*Get ready to experience the benefits of a high-impact, low-density project!*



OAKSTONE SN CELESTE

# SPECIFICATIONS



## STRUCTURE

RCC Framed Structure with Solid Cement Blocks.



## FLOORING

Vitrified Tiles For Living Bedroom & Dining  
Anti-skid Ceramic Tiles For Balcony & Utility



## KITCHEN

Black Granite Platform With Quartz Sink  
2" Feet Dadoing Above Cooking Platform



## ELECTRICAL

Anchor Wire & Modular Switches Of Anchor Roma Or Equivalent.  
A/c Point In Master Bedroom



## ELEVATOR

Branded make 4 Lifts of Passengers in A & B Block, CCTV Common Area & Amenities



## DOORS

**Main Door:** 8 Ft With Wooden Frame & Two Side Veneer Shutter.  
**Doors Internal:** Wooden Frame With Flush/skin Door.  
**UPVC Window:** With Safety Grill And Glass Panels



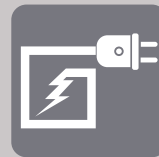
## PAINTING

Interior Walls - 2 Coat Putty, & 2 coat Asian Premium Paint  
Exterior Walls - Ace Or Equivalent.



## TOILET

CP Fittings Of Jaquar Or Equivalent  
Sanitary Fitting Of Jaquar Or Equivalent  
Bathroom EWC - High pressure wall mounted



## GENERATOR BACKUP

Power Backup for Common Areas & Power Backup for Each Flat, Lighting Points Only

## EXCELLENT CONNECTIVITY

- Project Is On Hosur National Highway NH44, Shopping Centers, And Top-rated Schools
- Located between Hosa Road junction and Electronic City
- Well-connected through public transport for hassle-free commuting
- Vibrant neighborhood with parks, restaurants, and entertainment options within walking distance

## KEY HIGHLIGHTS

- 500 meters from Hosa Road Metro Station
- 600 meters from Beratena Agrahara Metro Station
- 1 km from PES University, Electronic City
- 6 kms from Silk Board
- Hosa Road Junction - Electronic City,
- 100 meters from Apollo Cradle Hospital



OAKSTONE SN CELESTE





**BLOCK-A**  
East Facing  
2 BHK - 1144 Sqft



**BLOCK-B**  
East Facing  
3 BHK - 1430 Sqft



**BLOCK-B**  
North Facing  
3 BHK - 1466 Sqft



**BLOCK-A**  
North Facing  
3 BHK - 1463 Sqft



Oakstone  
Ventures

📍 Thimma Reddy Layout, Beratena Agrahara,  
Near Hosa Road Junction, Bengaluru 560100

☎ 95351 76676 | 99724 44272 | 99000 61947 | 99026 37636

🌐 [www.oakstonesnceleste.com](http://www.oakstonesnceleste.com)



Scan for location